



Campsey Priory

or

Ashe Abbey

Ashe Abbey was built in 1204 by Theobold de Valonies. His sisters, Joan and Agnes de Valonies, were the first prioresses.

The Abbey belonged to the St Augustine Order of nuns.

In 1348 Maud of Lancaster created a Chantry for five priests to say mass in the chapel of the Virgin Mary for the soul of her husband, Ralph.

Maud died on 5th May 1377 and is interred at the Priory along with her husband.

In 1536 the Abbey was dissolved under the Act of Dissolution brought in by Henry 8th. It was valued at £182 9s 5d.

A Selection of tiles from The Abbey at Loudham





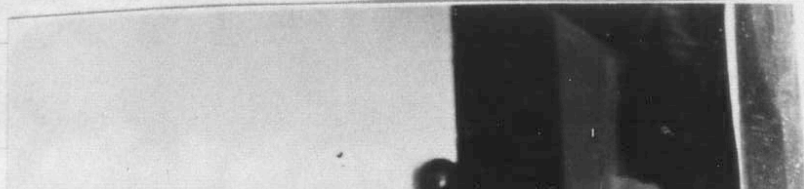
Abbey house showing the massive oak beams.



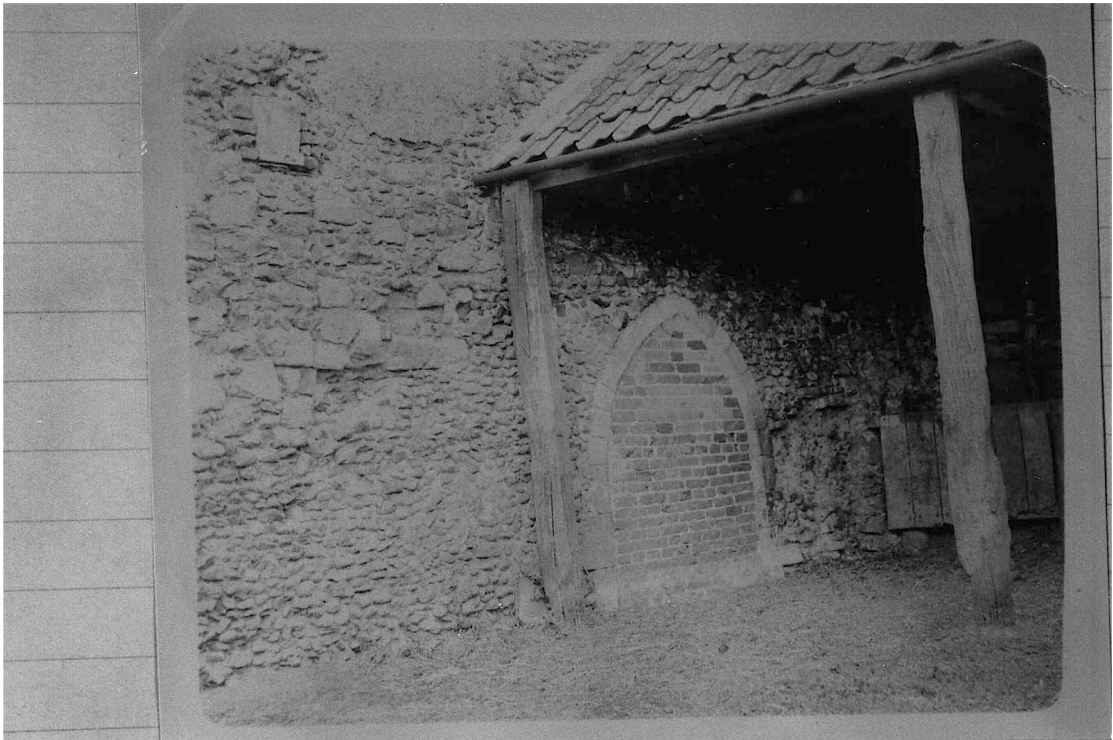
Staircase & gate in the hall.



in Abbey house showing the massive oak beams



The Barn





back view of Abbey house.

Plan of the Abbey

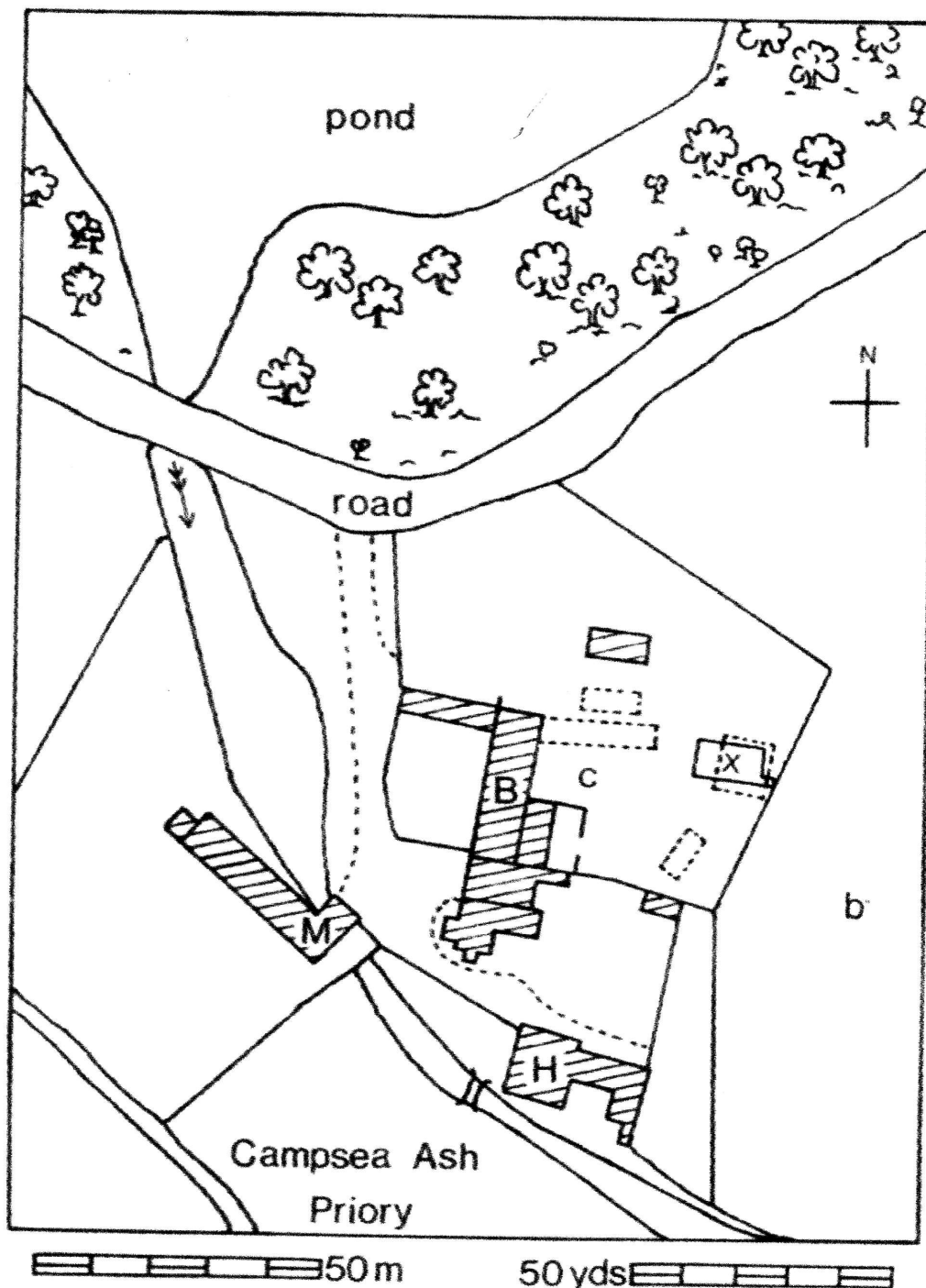


FIG. 31.—Campsea Ash Priory 1970. B: Barn; H: Ashe Abbey House; M: Mill; b: burials discovered 1969; c: stone coffins found 1843; x: area of 1970 excavation. Buildings on the 1904 O.S. map but no longer standing are represented in dotted outline.